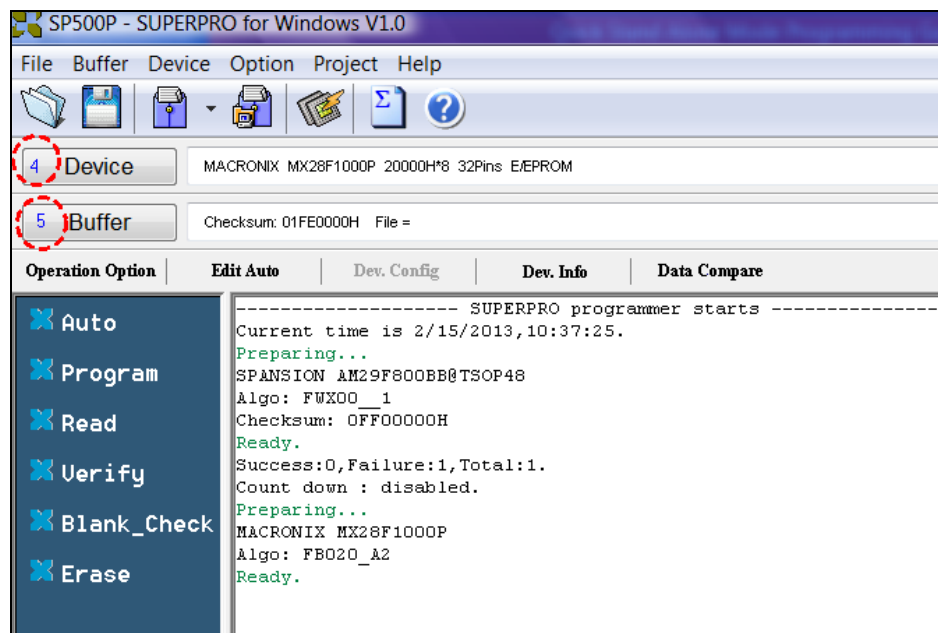


# XELTEK Engineering SUPERPRO® at Its Finest

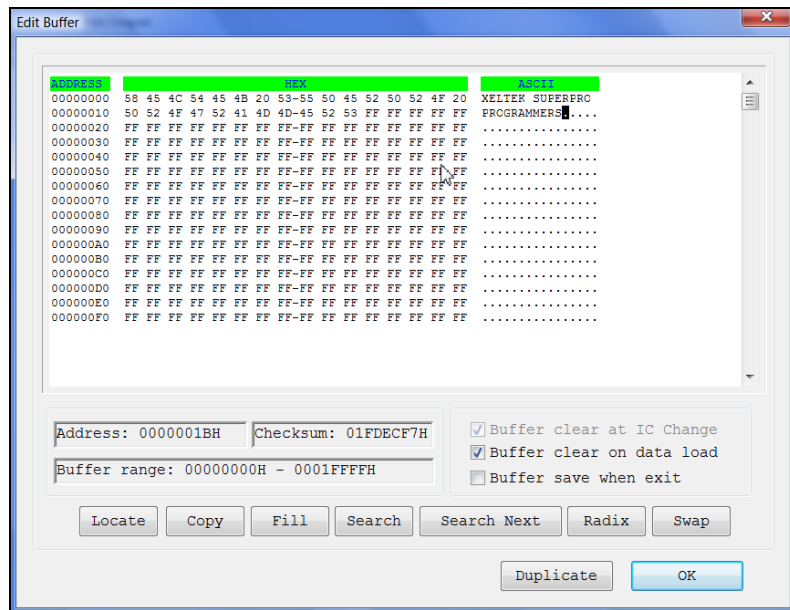
## Quick PC mode Programming Guide SuperPro® 500P / 600P / M Programmers

1. Connect programmer to PC via the provided USB cable.
2. Power on the programmer, and wait for a few seconds.
3. Double click on **SuperPro® M** or **Superpro 500P/600P** icon from the desktop to open software.
4. Click "**Device**" to select preferred chip manufacturer and device name. (In this example, **MX28F1000P** chip was selected) Click "OK".
5. To program a new chip, click "**Blank\_Check**", but if operation fails, click "**Erase**" first then "**Blank\_Check**".



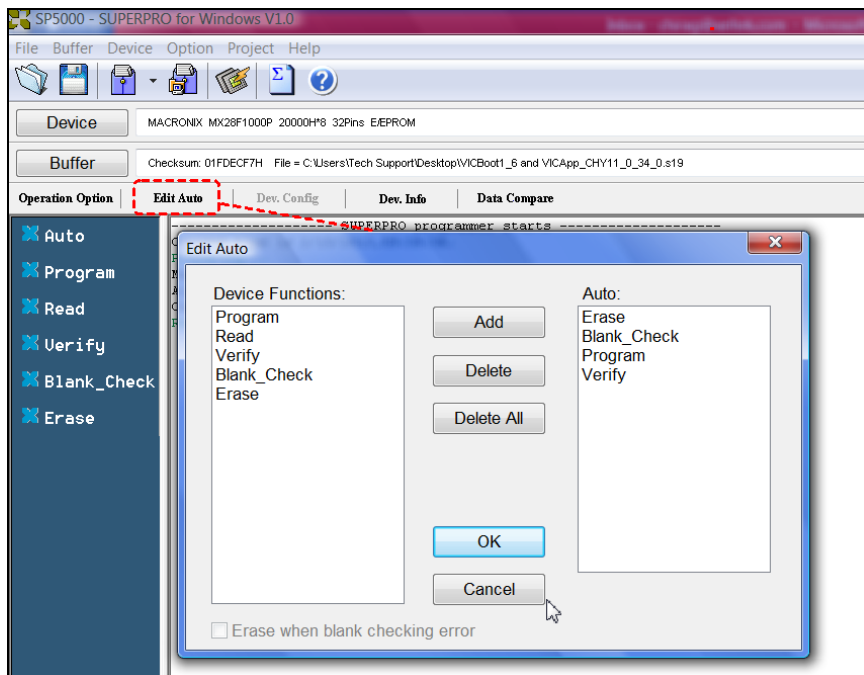
<Screenshot of Opened window>

6. Select "**Buffer**" and input data into **Buffer Edit** window. Click "OK".



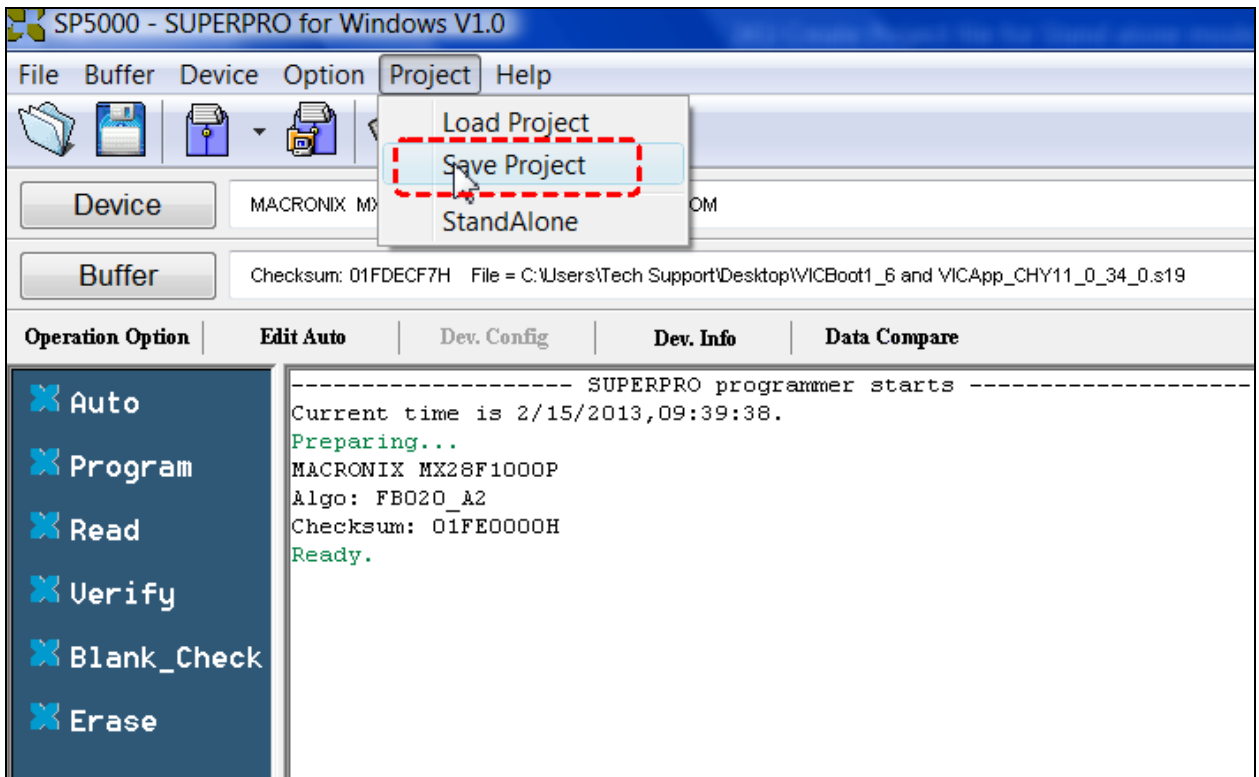
<Edit Buffer>

7. "Edit Auto" is like a batch command. Select device functions sequence and operations are carried out according to functions selected in the right column (Auto:).



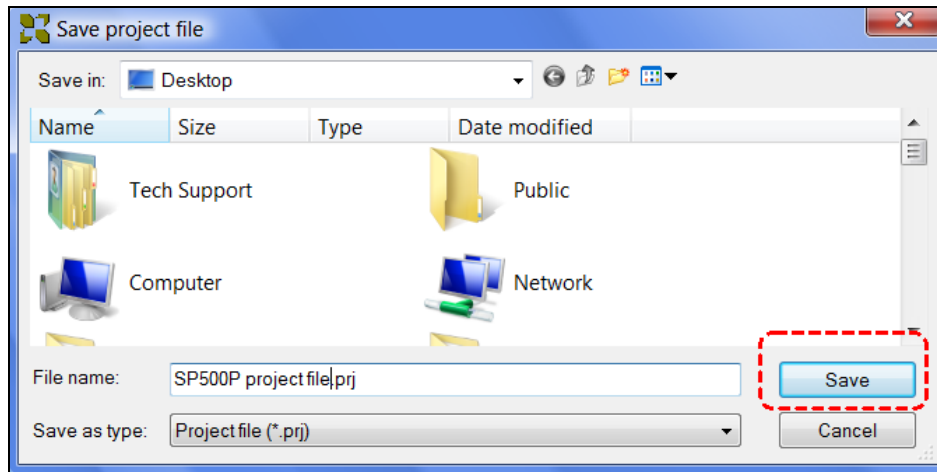
<Edit Auto>

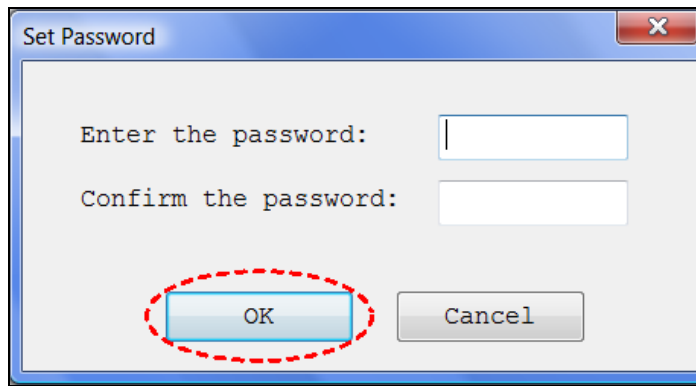
8. Click "Save Project".



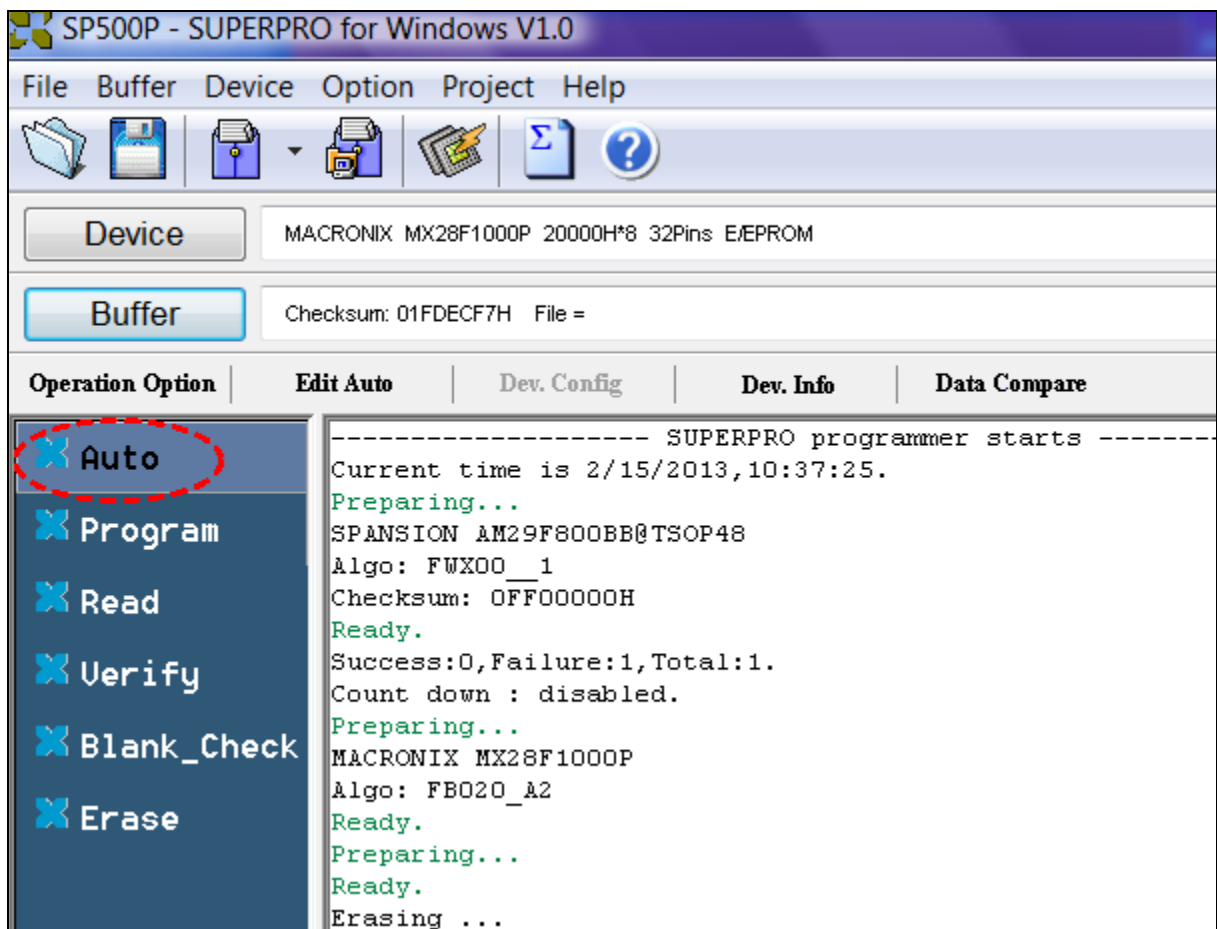
<Save Project>

9. Enter project file name and click **Save**.





10. Click "Auto" to erase, blank check, program and verify your chip.



<Auto>

For any questions, please contact [techsupport@xeltek.com](mailto:techsupport@xeltek.com)